



Background to the RAPID Programme

The RAPID Programme is the result of a commitment made within the framework 111 of the programme for prosperity and fairness to target investment in disadvantaged areas.

In 2001, the Irish Government agreed 25 target areas in the main urban centres to be the focus for the RAPID programme one of which was Loughlinstown and Shanganagh.

The RAPID programme is aimed at improving the quality of life and opportunities available to the residents of the most disadvantaged communities. It will do this through targeting very significant state resources at the needs of the disadvantaged area.

These resources will in part, be offered through new facilities and services provided through the National Development Plan

In part they will be offered by re-examining current methods of service delivery and re-designing this delivery so that it better meets communities needs.

RAPID Co ordinator

David Lawless

Dun Laoghaire Rathdown County
Council

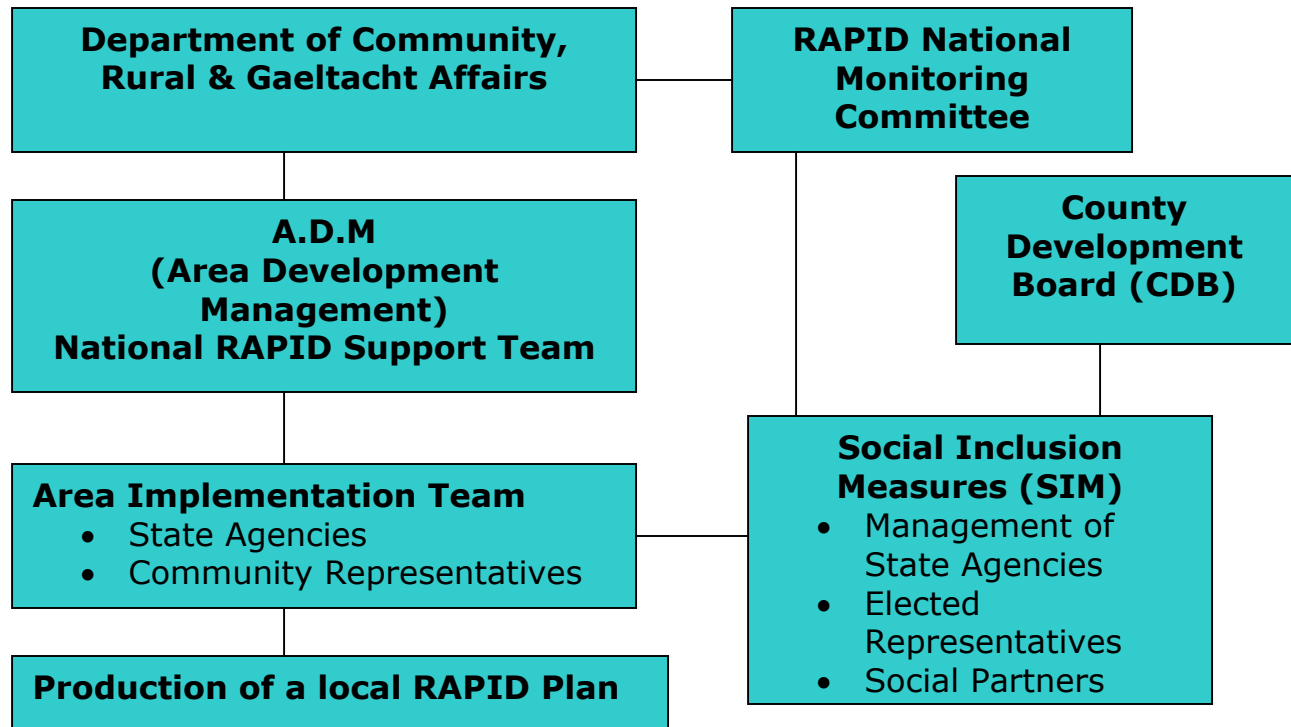
Marine Road
Dun Laoghaire
Co Dublin.

01 2054700

086 6074102

dlawless@dlrcoco.ie

Structure of the National RAPID Programme



Structure of the Local RAPID Programme



Task Groups

Set up task Groups to identify
Possible actions to address
identified needs

Strategic Objective 1.

Develop a Youth Strategy for the RAPID area to include the need for new facilities, specialised programmes for young people at risk or with special needs and improvement of the co ordination of services available.

Strategic Objective 2.

Ensure that Loughlinstown and Shanganagh become a safer place to live by developing a grater sense of security and addressing necessary infrastructure changes that will enhance this.

Strategic Objective 3.

Transform Loughlinstown and Shanganagh into better places to live by:

- A: Addressing the traffic infrastructure needs
- B: Developing the quality of local authority housing available
- C: Supporting the development of Estate Management.
- D: Carry out necessary environmental improvement works

Strategic Objective 4.

Develop an integrated approach to the delivery and co ordination of services promoting the health and well-being for children and their families in the RAPID area.

Strategic Objective 5.

Address the Education, Training and Employment needs of Loughlinstown and Shanganagh by improving the co ordination of existing delivery, developing services to meet identified gaps, maximising the use of existing facilities and developing new facilities where necessary

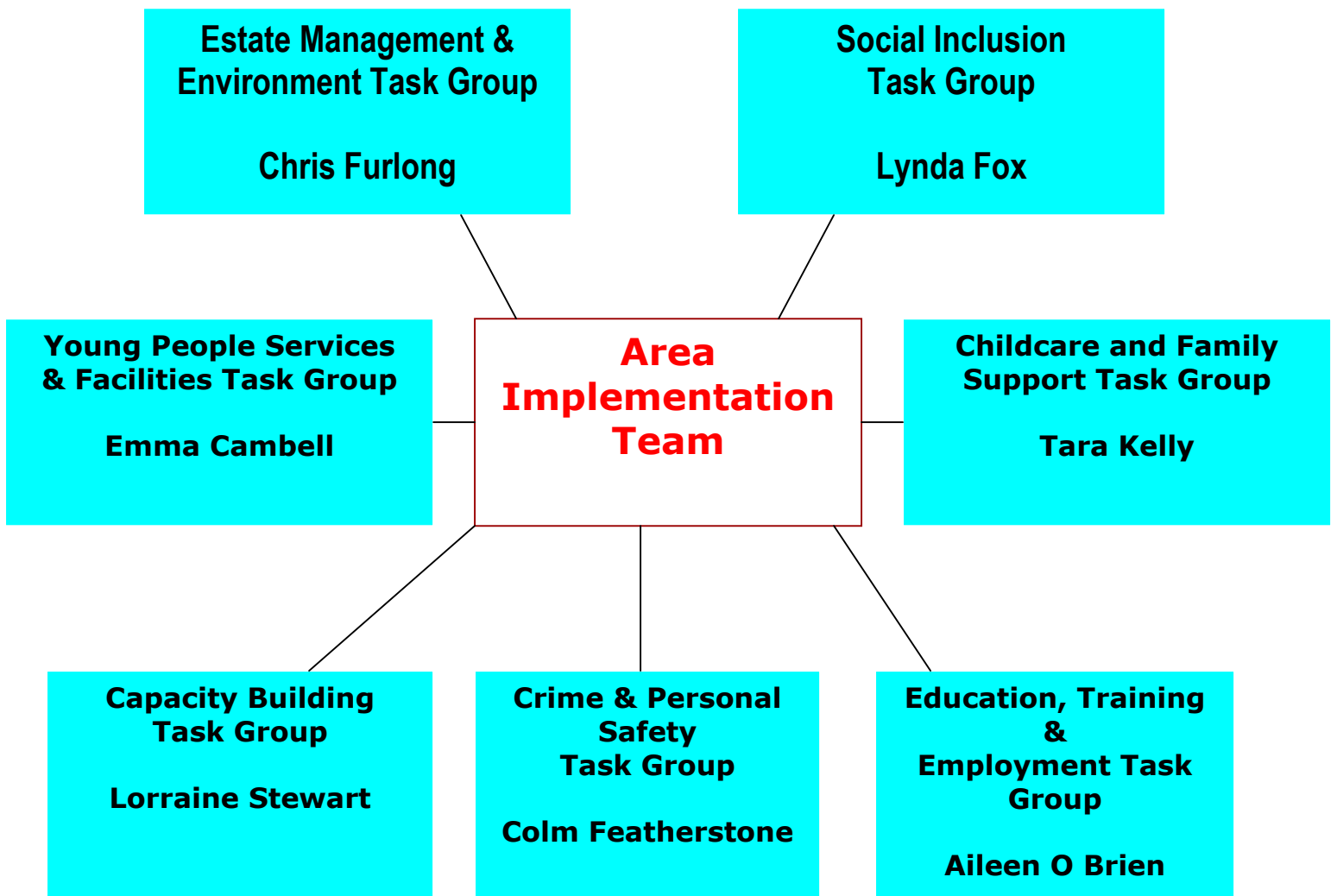
Strategic Objective 6.

Build the capacity of the communities and agencies in the RAPID area. Develop structures and services that will support the development of communities and agencies, promoting the integration and co ordination of services.

Strategic Objective 7.

Develop the social inclusion of target groups within Loughlinstown and Shanganagh

Implementation of RAPID Action plan



Actions Which RAPID has Supported

- Three new Community Development Projects.
- Re-development of Laurel Avenue. (Housing)
- Developing Childcare facilities in Shanganagh.
- Build new Playground Facilities in both. Loughlinstown and Shanganagh.
- Establish The Holly House project.
- Young Investors Project.
- Environmental enhancement works.
- Anti social laneway closures.
- Development of Sport Facilities.
- Support the Loughlinstown youth facility.
- "Family Learning" programmes.
- Women's development programmes.
- Annual Service Providers Workshop



Family Support Task Group.

Facilitator: Tara Kelly (Springboard)

Key Stakeholders invited to a Task Group meeting, including:- ECAHB, Social & Family Affairs, Springboard, MABS, County Council, VEC, Local residents.

The task group agreed that it would not become another talking shop and would focus on what family support services could be developed.

A number of organisations expressed interest in developing local service however expressed a concern about lack of a premises to accommodate them.

Programmes which could be developed locally include:-

- Seccessional Childcare (Springboard) Family Learning Programme (Dun Laoghaire VEC)
- Money advise outreach (MABS) Parenting programmes (Social & Family Affairs)
- Counselling for Women (SWAN) After Schools Programme (Local Residents)
- Parents Group (Springboard) Open mornings (Dunrath)

With support from Chris Furlong DLRCC a proposal was prepared and submitted to the County Council Housing dept. Requesting them to make available a premises to accommodate Family Support programmes.

To our delight this proposal was successful and a premises has been made available.

We are now in a position where we now have in place:-

- A Family Support Task Group (Committee, agency and community reps)
- A committed range of Family Support programmes.
- A premises from which this range of programmes can be accessed.

“This whole project has come about by improving co ordination between existing services and redesigning services to better meet local needs.”

Challenges within RAPID

- Lack of good "Baseline Data"
- RAPID is an add on to existing work loads
- Balance "Task & Process" Stay Focused
- Funding of RAPID Actions

Recent Developments

- Acknowledge individual organisations implementation of actions – Don't claim ownership
- Developing good Community participation
 - Different levels of community participation
 - Capacity building the ground
 - Childcare
- Review and evaluation of RAPID Plan.